

**568.** Ansonia Brass & Copper Co. "Drop Octagon", ca 1869. These slant bottom cases were similar to clocks made for the English market, and they later made some slight alterations and all companies began making what we still call today, "short drop or drop octagon" clocks. This 25" high case is made of mahogany, flat octagon top with a one half inch edge around the octagon, drop down door, carved side ears, and the slant bottom. Excellent label inside, good tablet, brass bezel, correct hands, new brass pendulum bob, and a replaced paper dial on the old pan. 8 day time and striking movement is running and striking on a coil gong. A very nice, well maintained, slightly restored, but all original except where noted. Ly-Ansonia #543. \$250-\$350.



**569.** Jerome & Co. "Octagon 8 Day", wall clock with a slant bottom, ca 1869. Several companies sold an almost identical clock, see #568 above. This mahogany case is about 24" high, flat on the octagon top, with an added border all around the top and bottom of the case. Research may fill in the blanks, I cannot. Perhaps one company made all the cases, or several companies made them, but they are almost identical. This clock is special because it has an alarm feature, which is very unusual in a short drop clock. The alarm movement is mounted on Jerome's blue label in the case bottom. Both the running movement and the alarm strike on the same iron bell. A near perfect clock, except there may be a new glass over the dial, and some very small paint touchup on the dial pan. 8 day movement, latches, pendulum, carved side ears, bottom glass, all appear to be original and correct for the clock. This clock is pictured anywhere Jeromes clocks are shown, i.e. Ehrhardt's Book No.1, page 6. \$250-\$350.



**570.** Waterbury Clock Co. shelf calendar clock, "Rochester", ca 1908. Too large to be called a kitchen clock, stands almost 27" high, complete oak case except for two pressed ornaments that should be on each side of the dial. The rectangle board you see is correct and original and the two decorative wood pieces should be nailed or glued to that board. Otherwise the wood parts are original and very good, dark from smoke, not cleaned. The glass is a replacement, pendulum bob is typical Waterbury stock, hands and the signed dial are also original. 8 day movement, half hour gong strike, and simple calendar. Only a small part of the label on the back remains, but it does have the complete makers name. Ly-Waterbury #215. \$200-\$300.



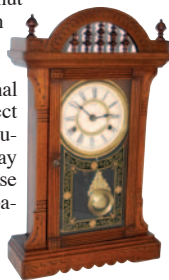
**571.** "Self Winding Clock Co. / New York", ca 1898. Gallery No.29, in an oak case, 21.5" square, has trim molding around the outside edge, and trim round molding around the glass. Full front door is hinged on the right, latches on the left. Two labels inside on the back of the door. Excellent painted dial, signed per the first line of this description. Three original hands, pendulum bob and stick, and many battery connections inside. There are now two batteries inside, probably old and run down, they are signed, "Eveready / 1 1/2 Volt / Hobby Battery". The case is clean, but not refinished, wood a medium shade of oak, and looks very nice. The clock was running in the house before it came to us. The batteries may be too low now to run it. You electric clock collectors know all about this type of clock but others may want to read about it in, Ly-American Clocks, Volume 2, #776. \$300-\$500.



**572.** Gambler's clock, or Trade Stimulator Clock, ca late 1800's. A similar clock was made by several American companies, using one of their regular "black" mantle clocks with some changes. Nothing is signed on this case. It is a simple wood case, 13" by 10", black enameled, with columns, metal ornaments, and imitation marble columns. Typical sash, glass, hands, and dial. This dial happens to be a replacement. Then they made some changes and additions to the case. A coin slot on top, coin return on the side, special key locking back cover with a viewing glass. Inside, besides the regular time and strike 8 day movement, are coin chutes, levers, spring, money trays, and all the paraphernalia needed to handle the coins. I have sold several of these, but I am not sure how the trays and chutes fit together in the back. You will have to go to school yourself and figure it out. \$250-\$500.



**573.** New Haven Clock Co. wood cased mantle clock, "Humber", ca 1886. An early walnut cased clock, 21" high, in nice clean original condition. All wood parts are original and there are no problems. Good metal door knob, original glass, replaced paper dial, correct hands, brass dial rings, brass pendulum bob, coil gong, and the 8 day movement. There are holes in the case where an alarm movement was probably on the backboard originally. It is now a time and striking clock. The case is plain, no carvings or anything elaborate, but grooved designs from top to bottom. Ly-New Haven #1303. \$150-\$250.



**574.** Ansonia Clock Co. wood cased mantle clock, "Remus", ca 1880. Walnut case is 21.25" high, clean and original. I say clean, but there is some smoke on the case that has darkened the wood over time. No attempt has been made to clean the smoke from the wood. Three finials, two lions heads at the bottom, Lady Minerva at the top, and one of Ansonia's special glasses that is still in excellent condition. Old paper dial, brass dial rings, correct hands, signed Ansonia winding key, signed Ansonia pendulum bob with the slow/fast dial, nickel bell, signed Ansonia beat scale, and a complete paper label on the back. 8 day time and striking movement is running and striking hours on the nickeled bell. Ly-Ansonia #1775. \$200-\$350.



**575.** Seth Thomas Clock Co. early mantle clock, "Arch Top", ca 1880, or earlier. This case was once black from smoke, partially cleaned off on the front. The door on the inside, the back, and some other places are still very black. The 16" high case is certainly not a cream puff, needs cleaning all over, some walnut stain or Old English stain on some of the wood parts that appear sun faded. The case has promise but some work will be required to bring it to life. New paper dial, ST hands, complete paper label inside, coil gong, and the 8 day movement that is running and striking. It still has the Geneva stops. A key lock on the side of the case. Ly-Seth Thomas, page 717. \$150-\$300.



**576.** Ansonia Clock Co. enameled iron case, "Verona", ca 1904. I do not believe I have ever sold this model. It is much nicer looking than the picture in the books indicates. It is 11.75" high, 16.25" wide, finished in black of course and it has Barbedienne Bronze Ornaments. All the ornaments are on the front and include, columns on the ends, a frieze across the base, and the two cupid castings. One cupid has a rooster the other an owl. There is a French sash, beveled glass, very good two piece porcelain dial, correct hands, and an open escapement. The dial is signed. It has a correct metal back cover, pendulum but not sure it is the correct one, 8 day signed movement that is running and striking a Cathedral gong. Ly-Ansonia #1047. \$300-\$500.



**577.** German RA, typical of many we have sold over the years, ca 1920. Walnut case is 39" tall, headpiece is probably original, but judging by the way it attaches in the slot it would be hard to tell. If all the finials were original it would be a miracle. The six on the case look good and one or all could be original. Three good glasses, pendulum bob, winding key, celluloid type dial ring, metal inter dial and dial rings. I did not pull the movement to look for a maker's signature, at this price it should not matter. If you are real lucky and it is a Lenzkirch, which I doubt, you can tell me I goofed. It runs 8 days, strikes a coil gong, and is in good overall condition. \$150-\$300.



**578.** Seth Thomas Clock Co. "Chime Clock No.61", ca 1921. Mahogany cabinet case with shaded marqueterie all around the front of the case and standing just less than 14" tall. Bowed and beveled glass in the cast brass sash, 6" silvered dial that is also slightly bowed, and is signed by ST. The hands are correct, three winding arbors on the dial face and a slow/fast adjusting arbor. This Sonora movement does not strike on bells, but on 4 rods, but chimes quarter hours and strikes the hours. Both movements are signed by ST, and both numbered, running movement is 8 day Pendulum bob and key inside the case. Full hinged back door, four turned bun wood feet underneath, and a chime/silent lever on the back. Overall a very nice case, has no repairs or new wood, very clean and ready to use. Ly-Seth Thomas #424. \$300-\$400.

